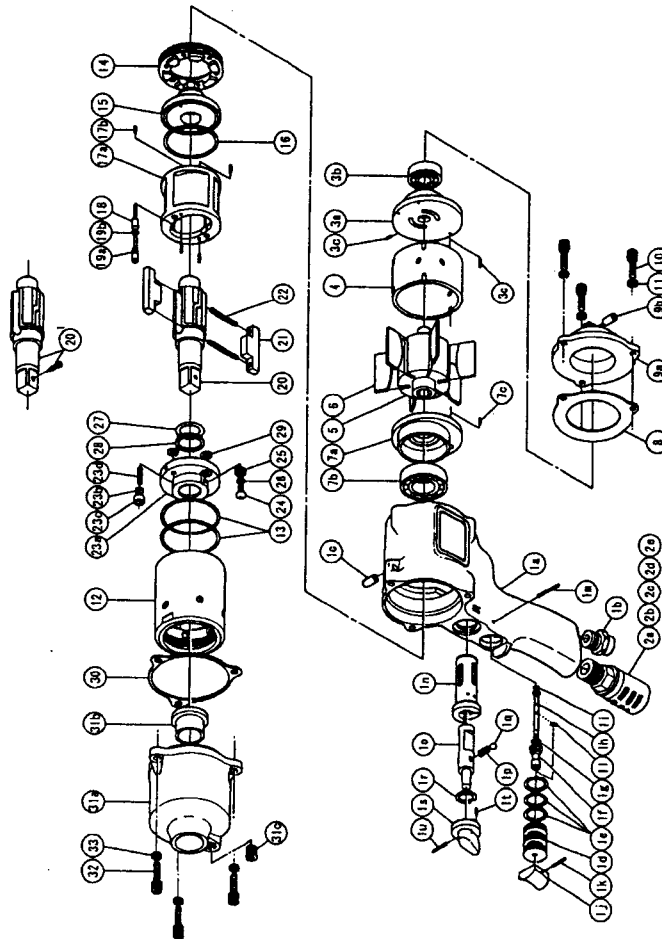




IMPULSE WRENCH

MODELS (YES/No.)	TOOL No.
YX-900 (05)	0237 0000 05 00
YX-900E (05)	0237 0000 05 04



PARTS LIST

No.	Name of Parts	Per set	Parts No.	No.	Name of Parts	Per set	Parts No.
1	Motor Case Assy.	1 set	0237 0011 0099	10	Hex. Bolt M5X16 P=0.8	3	8070 3051 0000
	a) Motor Case	1	※ ↑	11	Spring Washer M5	3	9200 3005 0000
	b) Hose Joint	1	0237 0113 0000	12	Liner Case	1	0237 0422 0000
	c) S.R.Pin 6X12	1	9250 1083 0000	13	O-Ring N45	2	9010 4043 0000
	Throttle Bushing Assy.	1 set	2058 0104 0099	14	Liner Cap	1	0213 0423 0000
	d) Throttle Bushing	1	※ ↑	15	Liner Upper Plate	1	0237 0424 0000
	e) O-Ring N15	3	9010 4008 0000	16	O-Ring N39	1	9010 4031 0000
	Throttle Rod Bushing Assy.	1 set	0078 0105 0099	17	Liner Assy.	1 set	0237 0425 0399
	f) Throttle Rod Bushing	1	※ ↑		a) Liner	1	※ ↑
	g) O-Ring No.3 (Hs90)	1	9010 3021 0000		b) Pin 3X7 <41-44HRC>	4	8052 1032 0000
	Throttle Rod Assy.	1 set	2058 0106 0199	18	Relief Valve	1	0237 0245 0000
	h) Throttle Rod	1	※ ↑	19	Spring Guide (B) Assy.	1 set	0322 0510 0099
	i) O-Ring N2	1	9010 4001 0000		a) Spring Guide B	1	※ ↑
	j) Throttle Knob	1	2024 0153 0000		b) O-Ring N3	1	9010 4025 0000
	k) S.R.Pin 1.5X14	1	9250 1005 0000	20	Main Shaft 1/2	1	0237 0614 0401
	l) Snap Ring ETW-2.8	1	9040 5008 0000	21	Blade	2	0241 0719 0000
	m) Slotted Pin G 3X24	1	8410 6024 0000	22	Spring 4X32	2	8020 1251 0000
	n) Reverse Bushing	1	0217 0004 0000	23	Liner Lower Plate (A) Assy.	1 set	0237 0426 0398
	o) Reverse Valve	1	0217 0005 0000		a) Liner Lower Plate	1	※ ↑
	p) Spring 4.5X15 N=7 0.5	1	8020 1016 0000		b) Nylon Bushing M4	1	0261 0431 0000
	q) Ball 3/16 S	1	9150 3005 0000		c) Bushing	1	0261 0728 0000
	r) Snap Ring IRTW-12	1	9040 3002 0000		d) Screw M4X14	1	9480 2022 0000
	Reverse Lever Assy.	1 set	0237 0007 0099	24	Oil Plug M4	1	0048 0010 0000
	s) Reverse Lever	1	※ ↑	25	Washer 6.5X8.5X1.1	1	8040 1073 0000
	t) S.R.Pin 2X6	1	9250 1011 0000	26	O-Ring N4	1	9010 4021 0000
	u) S.R.Pin 2X12	1	9250 1015 0000	27	O-Ring 2.55X17.8X22.9 (Hs70)	1	9010 6017 0000
2	Silencer Assy. Pf3/8	1 set	3048 0053 0299	28	Back-Up Ring 18X22.4X0.8	1	9090 1006 0000
	a) Silencer Body Pf3/8	1	※ ↑	29	O-Ring N6	2	9010 4026 0000
	b) Silencer Cover	1	3048 0081 0200	30	S-Packing B	1	0213 0003 0002
	c) Silencer Sheet	1	3048 0032 0000	31	Hammer Case (A) Assy.	1 set	0237 0401 0199
	d) Joint Ring	1	1105 0116 0000		a) Hammer Case A	1	0237 0401 0001
	e) O-Ring N20	1	9010 4010 0000		b) Main Shaft Bushing	1	0229 0612 0000
3	Upper Plate Assy.	1 set	0947 0303 0099		c) Socket Plug Pt1/8	1	8210 5001 0000
	a) Upper Plate	1	0947 0303 0000	32	Hex. Bolt M5X16 P=0.8	3	8070 3051 0000
	b) Ball Bearing 6000	1	9100 1015 0000	33	Spring Washer M5	3	9200 3005 0000
	c) S.R.Pin 2X5	2	9250 6001 0000		Standard Accessories		
4	Cylinder	1	0213 0304 0000		Touch Joint 1/4-02	1	9690 0002 0000
5	Rotor	1	0213 0305 0000		Hexagon Wrench H2X65X65	1	9610 1013 0000
6	Vane	6	0237 0306 0000		Hexagon Wrench H5	1	9610 1006 0000
7	Lower Plate Assy.	1 set	0947 0307 0099		Parts for YX-900E <05>		
	a) Lower Plate	1	0947 0307 0000	20	1 Main Shaft 1/2 Assy.	1 set	0237 0614 0659
	b) Ball Bearing 6003	1	9100 1018 0000				
8	c) S.R.Pin 2X5	1	9250 6001 0000				
	S-Packing A	1	0213 0003 0001				
9	Motor Case Cover Assy.	1 set	0213 0001 0099				
	a) Motor Case Cover	1	※ ↑				
	b) S.R.Pin 6X12	1	9250 1083 0000				

The part "※" can not be supplied individually.
So please order it as a unit of assembly shown by arrow mark (↑).

YOKOTA EUROPE BV
 e-mail: info@impulsetools.com <http://www.impulsetools.com>
 P.O. BOX 392 NL-1000 AJ AMSTERDAM PHONE: 020-625 29 53 FAX: 020-625 35 69
 Hydraulic Impulse Wrenches, Impact Wrenches, Drills, Grinders, Screw Drivers, Chippers, Scales, Pumps.

