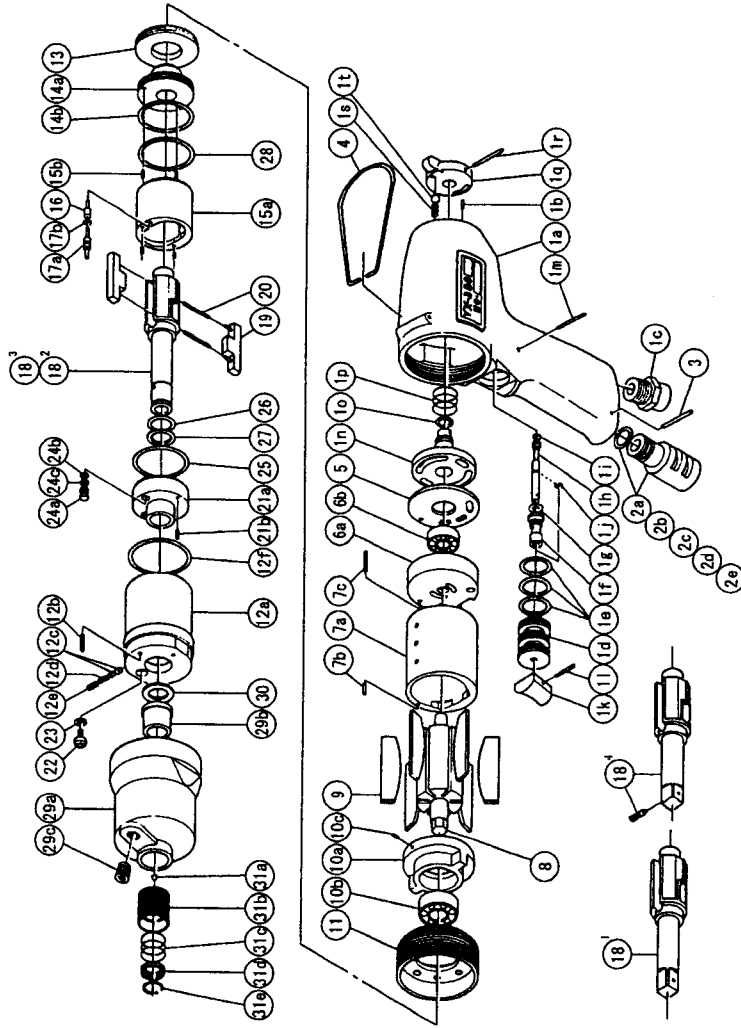


# IMPULSE WRENCH

MODELS	(YES/NO)	TOOL No.
YX-380	(05)	0086 0000 05 00
YX-380A	(05)	0086 0000 05 01
YX-380B	(05)	0086 0000 05 02
YX-380E	(05)	0086 0000 05 04



The part "※" can not be supplied individually.  
So please order it as a unit of assembly  
shown by arrow mark (↑).

# PARTS LIST

No.	Name of Parts	Per set	Parts No.	No.	Name of Parts	Per set	Parts No.
1	Motor Case Assy.	1 set	0086 0011 0199	13	Liner Cap	1	0086 0423 0000
	a) Motor Case	1	※ ↑	14	Liner Upper Plate Assy.	1 set	0135 0424 0199
	b) S.R. Pin 3X6	1	9250 1043 0000		a) Liner Upper Plate	1	※ ↑
	c) Hose Joint	1	0237 0113 0000	15	b) O-Ring N28	1	9010 4029 0000
	Throttle Bushing Assy.	1 set	2058 0104 0099		Liner Assy.	1 set	0135 0425 0199
	d) Throttle Bushing	1	※ ↑		a) Liner	1	※ ↑
	e) O-Ring N15	3	9010 4008 0000		b) Pin 2.5X6 <41-44HRC>	4	8052 1030 0000
	Throttle Rod Bushing Assy.	1 set	0078 0105 0099	16	Relief Valve	1	0086 0245 0000
	f) Throttle Rod Bushing	1	※ ↑	17	Spring Guide (B) Assy.	1 set	0086 0510 0099
	g) O-Ring No.3 (Hs90)	1	9010 3021 0000		a) Spring Guide B	1	※ ↑
	Throttle Rod Assy.	1 set	2058 0106 0199		b) O-Ring 0.7X2X3.4	1	9010 6020 0000
	h) Throttle Rod	1	※ ↑	18	Main Shaft 3/8	1	0086 0614 0401
	i) O-Ring N2	1	9010 4001 0000	19	Blade	2	0086 0719 0300
	j) Snap Ring ETW-2.8	1	9040 5008 0000	20	Spring 3.4X22.7	2	8020 1253 0000
	k) Throttle Knob	1	2024 0153 0000	21	Liner Lower Plate Assy.	1 set	0135 0426 0099
	l) S.R. Pin 1.5X14	1	9250 1005 0000		a) Liner Lower Plate	1	※ ↑
	m) O-Slotted Pin G 3X24	1	8410 6024 0000	22	b) S.R. Pin 3X8	1	9250 2022 0000
	Reverse Valve Assy.	1 set	0086 0005 0099		Oil Plug	1	0081 0010 0100
	n) Reverse Valve	1	※ ↑	23	O-Ring N3	1	9010 4025 0000
	o) O-Ring P7	1	9010 1005 0000	24	Oil Stop Cap Assy.	1 set	0081 0602 0099
	p) Spring 13.4X9	1	8020 1209 0000		a) Oil Stop Cap	1	※ ↑
	q) Reverse Lever	1	2014 0007 0100		b) O-Ring N2	1	9010 4001 0000
	r) Pin 2X22	1	8055 1050 0000		c) Back-Up Ring	1	9090 2001 0000
	s) Spring 3X6 N=4 0.4	1	8020 1008 0000	25	O-Ring 1X29.2X31.2	1	9010 6022 0000
	t) Ball M3 S	1	9150 1003 0000	26	O-Ring 2.3X11.8X16.4	1	9010 6019 0000
2	Silencer Assy.	1 set	0081 0053 0099	27	Back-Up Ring 12X16X0.8	1	9090 1010 0000
	a) Silencer	1	※ ↑	28	O-Ring 1.3X28.7X31.3	1	9010 6010 0000
	b) O-Ring N10	1	9010 4004 0000	29	Hammer Case Assy.	1 set	0086 0401 0099
	c) Silencer Sheet B	1	0095 0032 0002		a) Hammer Case	1	0086 0401 0000
	d) Silencer Cap	1	2308 0084 0000		b) Main Shaft Bushing	1	0081 0812 0000
	e) Snap Ring RTW-14	1	9040 1006 0000		c) Socket Plug Pt1/8	1	8210 5001 0000
3	S.R. Pin 3X16	1	9250 1050 0000	30	Washer 12.5X18X0.3	1	8041 5034 0000
4	Hanger	1	0004 0017 0000	30	Washer 12.5X18X0.5	1	8041 5011 0000
5	Upper Plate Spacer	1	0086 0301 0000	30	Washer 12.5X18X1	1	8041 5021 0000
6	Upper Plate Assy.	1 set	0086 0303 0199		Standard Accessories		
	a) Upper Plate	1	0086 0303 0100		Universal Air Joint 1/4	1	9690 0015 0000
	b) Ball Bearing 697	1	9100 1060 0000		Hexagon Wrench H1.5X65X65	1	9610 1012 0000
7	Cylinder Assy.	1 set	0086 0304 0199		Hexagon Wrench H5	1	9610 1006 0000
	a) Cylinder	1	※ ↑		Parts for YX-380A <05> · YX-380B <05>		
	b) S.R. Pin 2X6	1	9250 1011 0000	18	Main Shaft	1	0086 0614 0351
	c) S.R. Pin 2X14	1	9250 1017 0000	18	Main Shaft B	1	0086 0614 0352
8	Rotor	1	0086 0305 0000	31	Bit Chuck Assy.	1 set	2057 0414 0099
9	Vane	6	0086 0306 0100		a) Bit Chuck	1	2057 0414 0000
10	Lower Plate Assy.	1 set	0086 0307 0199		b) Ball 1/8 S	1	9150 3009 0000
	a) Lower Plate	1	0086 0307 0100		c) Spring 13.5X10	1	8020 1340 0000
	b) Ball Bearing 6900	1	9100 1046 0000		d) Spring Washer	1	2331 0419 0000
	c) Pin 2.5X6	1	8055 1053 0000		e) Retaining Ring 10X1	1	8030 1009 0000
11	Lower Plate Spacer	1	0086 0311 0100		Parts for YX-380E <05>		
12	Liner Case (A) Assy.	1	0086 0422 0398	18	Main Shaft 3/8 Assy.	1 set	0086 0614 0659
	a) Liner Case	1	※ ↑				
	b) Screw M3X8 P=0.5	1	9480 2024 0000				
	c) Rubber Plate	2	0259 0047 0000				
	d) Spring 3X5	1	8020 1288 0000				
	e) Screw M4X4	1	9480 2031 0000				
	f) O-Ring N32	1	9010 4014 0000				



**YOKOTA EUROPE BV**  
e-mail info@impulsetools.com http://www.impulsetools.com  
P.O. BOX 392 NL-1000 AJ AMSTERDAM PHONE: 020-625 29 53 FAX: 020-625 35 69  
Hydraulic Impulse Wrenches, Impact Wrenches, Drills, Grinders, Screw Drivers, Chippers, Scales, Pumps.