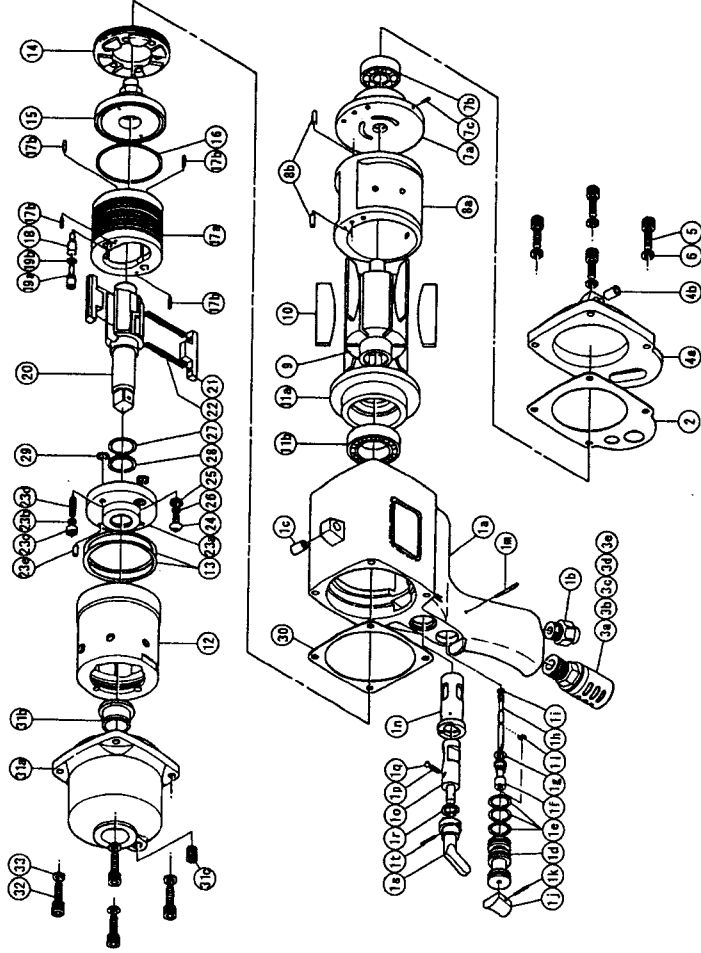
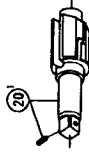




IMPULSE WRENCH

MODELS (YESNo.)	TOOL No.
YX-2400 (05)	0406 0000 05 00
YX-2400E (05)	0406 0000 05 04



PARTS LIST

No.	Name of Parts	Per set	Parts No.	No.	Name of Parts	Per set	Parts No.
1	Motor Case Assy.	1 set	0406 0011 0099	12	Liner Case	1	0406 0422 0000
	a) Motor Case	1	※ ↑	13	O-Ring N55	2	9010 4036 0000
	b) Hose Joint	1	0237 0113 0000	14	Liner Cap	1	0229 0423 0000
	c) S.R.Pin 8X12	1	9250 1110 0000	15	Liner Upper Plate	1	0406 0424 0000
	Throttle Bushing Assy.	1 set	0229 0104 0099	16	O-Ring N48	1	9010 4035 0000
	d) Throttle Bushing	1	※ ↑	17	Liner Assy.	1 set	0320 0425 0399
	e) O-Ring N15	3	9010 4008 0000		a) Liner	1	※ ↑
	f) Throttle Rod Bushing Assy.	1 set	0323 0105 0099		b) Pin 3.5X7 <41-44HRC>	4	8052 1033 0000
	g) Throttle Rod Bushing	1	※ ↑	18	Relief Valve	1	0406 0245 0000
	h) O-Ring No.5 (Hs90)	1	9010 3022 0000	19	Spring Guide (B) Assy.	1 set	0320 0510 0099
	i) Throttle Rod Assy.	1 set	0229 0106 0199		a) Spring Guide B	1	※ ↑
	j) Throttle Rod	1	※ ↑		b) O-Ring P3	1	9010 1001 0000
	k) O-Ring N2	1	9010 4001 0000	20	Main Shaft 1/2	1	0320 0614 0501
	l) Throttle Knob	1	2024 0153 0000	21	Blade	2	0320 0719 0100
	m) S.R.Pin 1.5X14	1	9250 1005 0000	22	Spring 4.6X41 N=30	2	8020 1215 0000
	n) Snap Ring ETW-2.8	1	9040 5008 0000	23	Liner Lower Plate (A) Assy.	1 set	0406 0426 0398
	o) Slotted Pin G 3X24	1	8410 6024 0000		a) Liner Lower Plate	1	※ ↑
	p) Reverse Bushing	1	0235 0004 0000		b) Nylon Bushing M5	1	0406 0431 0200
	q) Reverse Valve	1	0235 0005 0000		c) Bushing	1	0406 0728 0000
	r) Spring 4X6 N=3 0.5"	1	8020 1022 0000		d) Screw M5X16	1	9480 2025 0000
	s) Ball M4 S	1	9150 1005 0000		e) S.R.Pin 4X8	1	9250 2024 0000
	t) Snap Ring IRTW-14	1	9040 3004 0000	24	Hex. Button Bolt M5X8 P=0.8	1	8071 1011 0000
	u) Reverse Lever	1	0048 0007 0100	25	Washer 7.5X9.5X1.2	1	8040 1127 0000
	v) S.R.Pin 3X14	1	9250 1049 0000	26	O-Ring N5	1	9010 4033 0000
2	S-Packing A	1	0406 0003 0001	27	O-Ring 2.55X17.8X22.9(HS70)	1	9010 6017 0000
3	Silencer Assy. PF3/8	1 set	0405 0053 0199	28	Back-Up Ring 18X22.4X0.8	1	9090 1006 0000
	a) Silencer Body PF3/8	1	※ ↑	29	O-Ring NB <Hs90>	2	9010 4057 0000
	b) Silencer Cover	1	3048 0081 0200	30	S-Packing B	1	0406 0003 0002
	c) Silencer Sheet	1	0405 0032 0000	31	Hammer Case Assy.	1 set	0406 0401 0199
	d) Joint Ring	1	1105 0116 0000		a) Hammer Case	1	0406 0401 0100
4	O-Ring N20	1	9010 4010 0000		b) Main Shaft Bushing	1	0229 0612 0000
	Motor Case Cover Assy.	1 set	0406 0001 0099		c) Socket Plug Pt1/8	1	8210 5001 0000
	a) Motor Case Cover	1	※ ↑	32	Hex. Bolt M6X20 P=1	4	8070 3034 0000
	b) S.R.Pin 8X12	1	9250 1110 0000	33	Spring Washer M6	4	9200 3006 0000
5	Hex. Bolt M6X20 P=1	4	8070 3034 0000		Standard Accessories		
6	Spring Washer M6	4	9200 3006 0000		Touch Joint 1/4-02	1	9690 0002 0000
7	Upper Plate Assy.	1 set	0406 0303 0199		Hexagon Wrench H2.5X70X70	1	9610 1014 0000
	a) Upper Plate	1	0406 0303 0100		Hexagon Wrench H5	1	9610 1006 0000
	b) Ball Bearing 6201	1	9100 1021 0000		Parts for YX-2400E <05>		
	c) S.R.Pin 2.5X6	1	9250 1030 0000	20	1 Main Shaft 1/2 Assy.	1 set	0320 0614 0659
8	Cylinder Assy.	1 set	0406 0304 0099				
	a) Cylinder	1	※ ↑				
	b) S.R.Pin 4X10	2	9250 1066 0000				
9	Rotor	1	0406 0305 0000				
10	Vane	6	0406 0306 0100				
11	Lower Plate Assy.	1 set	0406 0307 0199				
	a) Lower Plate	1	0406 0307 0100				
	b) Ball Bearing 6905	1	9100 1047 0000				

The part "※" can not be supplied individually.
So please order it as a unit of assembly
shown by arrow mark (↑).

YOKOTA EUROPE BV
e-mail info@impulsetools.com <http://www.impulsetools.com>
P.O. BOX 392 NL-1000 AJ AMSTERDAM PHONE: 020-625 29 53 FAX: 020-625 35 69
Hydraulic Impulse Wrenches, Impact Wrenches, Drills, Grinders, Screw Drivers, Chippers, Scales, Pumps.

