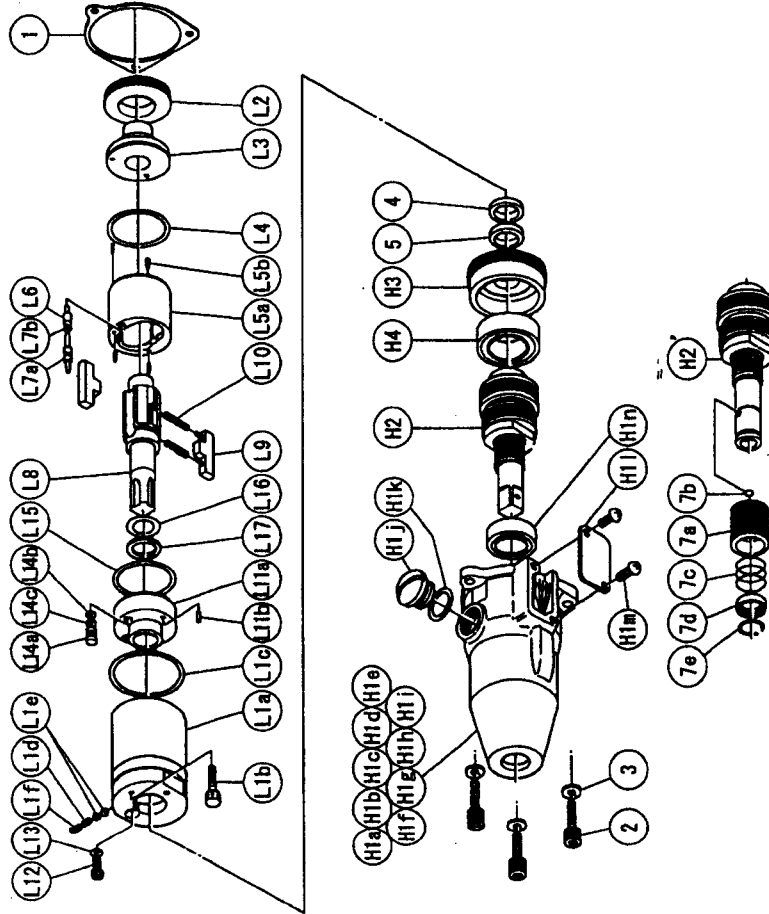




**SYSTEM WRENCH**

MODELS (YES/No.)	TOOL No.
YEX-150 (03)	0093 0000 03 00
YEX-150A (03)	0093 0000 03 01
YEX-150-G (03)	0093 0000 03 11

**Exploded View of Liner Case and Hammer Case**



No.	Name of Parts	Per set	Parts No.
L1	Liner Case Assy.	1 set	0093 0422 0799
L1	Liner Case (A) Assy.	1 set	0093 0422 0488
a)	Liner Case	※	↑
b)	Adjust Bolt M3X8 P=0.5	1	0093 0522 0200
c)	O-Ring N30	1	9010 4019 00 00
d)	Spring 2.4X6	1	8020 1287 00 00
e)	Rubber Plate	2	0081 0047 00 00
f)	Screw M3X3 P=0.5	1	9480 2028 00 00
L2	Liner Cap	1	0081 0423 01 00
L3	Liner Upper Plate	1	0259 0424 01 00
L4	O-Ring 1.5X26.5X29.5	1	9010 6023 00 00
L5	Liner Assy.	1 set	0136 0425 0289
a)	Liner	※	↑
b)	Pin FF 2X4.8(41-44HRC)	4	8052 1041 0000
L6	Relief Valve	1	0088 0245 00 00
L7	Spring Guide (B) Assy.	1 set	0088 0510 00 99
a)	Spring Guide B	1	※
b)	O-Ring 0.7X2X3.4	1	9010 6020 00 00
L8	Liner Shaft	1	0079 0798 02 00
L9	Blade	2	0088 0719 03 00
L10	Spring 3.1X20	2	8020 1296 00 00
L11	Liner Lower Plate Assy.	1 set	0158 0426 00 99
a)	Liner Lower Plate	1	※
b)	S.R.Pin 3X8	1	9250 2022 00 00
L12	c)Oil Plug	1	0081 0010 01 00
L13	O-Ring N3	1	9010 4025 00 00
L14	Oil Stop Cap Assy.	1 set	0081 0602 00 99
a)	Oil Stop Cap	1	※
b)	O-Ring N2	1	9010 4001 00 00
c)	Back-Up Ring	1	9090 2001 00 00
L15	O-Ring 1X25.2X27.2	1	9010 6012 00 00
L16	O-Ring P12(R-RCG11003V)H80*	1	9011 7001 0000
L17	Back-Up Ring 12X16X0.8	1	9090 1010 00 00
1	S-Packing	1	0093 0003 00 00

The part ※ can not be supplied individually.  
So please order it as a unit of assembly  
shown by arrow mark (↑).

**Parts For Hammer Case**

No.	Name of Parts	Per set	Parts No.
H	Hammer Case Assy.	1 set	0093 0401 01 99
H1	Hammer Case (A) Assy.	1 set	0093 0401 00 98
a)	Hammer Case	1	※
b)	Core A Assy.	1 set	※
c)	Core B	1	※
d)	Spacer A	1	※
e)	Core C	1	※
f)	Core D Assy.	1 set	※
g)	Screw M4X5 P=0.7	1	9480 1006 00 00
h)	Micro Connector OX-202	4	8500 4001 00 00
i)	Contraction Tube 1.5X9	4	9380 5010 00 00
j)	Regulator Cap	1	0093 0204 00 00
k)	O-Ring N10	1	9010 4004 00 00
l)	Cover Plate	1	0093 0014 00 00
m)	Screw M4X8 P=0.7	2	9410 2004 00 00
n)	Ball Bearing 6801ZZ	1	9100 5028 00 00
H2	Main Shaft Assy.	1 set	0093 0614 01 99
H3	Bearing Case	1	0093 0650 00 00
H4	Ball Bearing 6903ZZ	1	9100 5025 00 00
2	Hex. Bolt M4X14 P=0.7	3	8070 3008 00 00
3	Spring Washer M4	3	9200 3004 00 00
4	Washer 12.3X18X6.1	1	8040 6025 00 00
5	★ Washer 12.5X18X0.5	1	8041 5011 00 00
5	★ Washer 12.5X18X0.3	2	8041 5034 00 00
6	Touch Joint 1/4-07	1	9690 0007 00 00
	Standard Accessories		
	TF Pin 2X90	1	8051 6001 00 00
	Protector	1	0093 0029 00 00
	Parts for YEX-150A <03>		
H'	Hammer Case Assy.	1 set	0093 0401 00 89
H2'	Main Shaft Assy.	1 set	0093 0614 00 89
7	Bit Chuck Assy.	1 set	2057 0414 00 99
a)	Bit Chuck	1	2057 0414 00 00
b)	Ball 1/8 S	1	9150 3009 00 00
c)	Spring 13.5X10	1	8020 1340 00 00
d)	Spring Washer	1	9200 3004 0000
e)	Retaining Ring 10X1	1	8030 1009 00 00

**Parts for YEX-150-G <03>**

H''	Hammer Case Assy.	1 set	0093 0401 01 35
H1'	Hammer Case Assy. (1)	1 set	0093 0401 00 89
	Hammer Case A	1	※

The part ※ can not be supplied individually.  
So please order it as a unit of assembly  
shown by arrow mark (↑).

★ marked parts; use one of them.



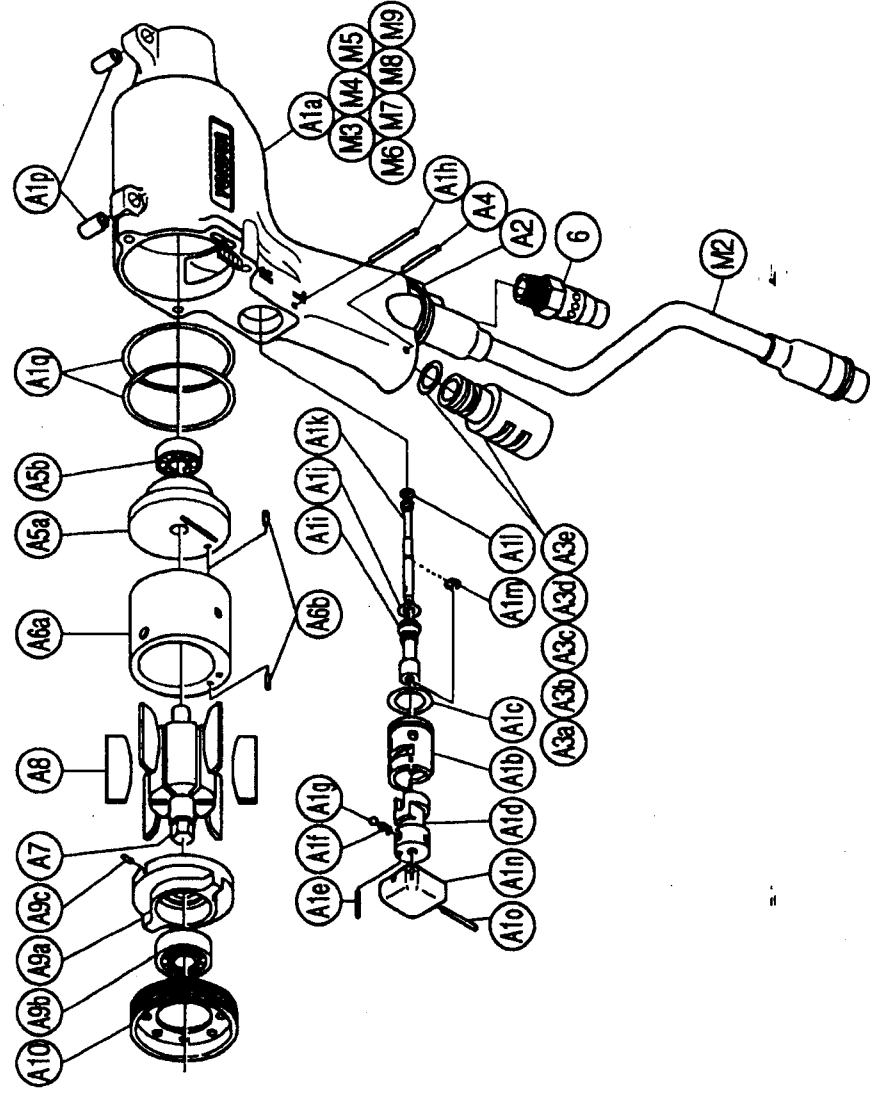
# YOKOTA EUROPE BV

e-mail info@impulsetools.com <http://www.impulsetools.com>  
P.O. BOX 362 NL-1000 AJ AMSTERDAM PHONE: 020-625 29 53 FAX: 020-625 35 89  
Hydraulic Impulse Wrenches, Impact Wrenches, Drills, Grinders, Sander Drivers, Chippers, Pumps.



**SYSTEM WRENCH**

MODELS	(YES/No.)	TOOL No.
YEX-150	(03)	0093 0000 03 00
YEX-150A	(03)	0093 0000 03 01
YEX-150-G	(03)	0093 0000 03 11



No.	Name of Parts	Per set	Parts No.	No.	Name of Parts	Per set	Parts No.
M1	Motor Case Assy.	1 set	0093 0011 0489	M2	Holder Assy.	1 set	0407 0717 00 99
	Motor Case Assy. (1)	1 set	0093 0011 01 85	M3	Contraction Tube 3'X15	1	9380 5007 00 00
A1	Motor Case (B) Assy.	1 set	0093 0011 00 97	M4	Contraction Tube 1.5'X10	4	9380 5008 00 00
	a) Motor Case	1	*	M5	Micro Connector PM-10	1	8500 2004 0000
	b) Throttle Bushing Assy.	1 set	0093 0104 00 99	M6	Buzzer PKB24SP-3816	1	8440 1001 00 00
	c) Throttle Bushing	1	*	M7	Print Basic A	1	0127 0798 00 01
	d) O-Ring N15	1	9010 4008 00 00	M8	O-Ring P20	1	9010 1017 00 00
	e) Reverse Valve	1	0093 0005 00 00	M9	Snap Ring RTW-24	1	9040 1014 00 00
	f) S.R.Pin 2.5X12	1	9250 1034 00 00				
	g) Spring 3X4	1	8020 1246 00 00				
	h) Ball 1/8 S	1	9150 3009 00 00				
	i) A.A. Pin 3X23.8	1	8051 3041 00 00				
	j) Throttle Rod Bushing Assy.	1 set	0078 0105 00 99				
	k) Throttle Rod Bushing	1	*				
	l) Throttle Rod No.3 (Hs90)	1	9010 3021 00 00				
	m) Throttle Rod Assy.	1 set	2058 0106 01 99				
	n) Throttle Rod	1	*				
	o) O-Ring N2	1	9010 4001 00 00				
	p) Snap Ring ETW-2.8	1	9040 5008 00 00				
	q) Throttle Knob	1	0093 0153 00 00				
	r) S.R.Pin 1.5X14	1	9250 1005 00 00				
	s) S.R.Pin 6X10	2	9250 2012 00 00				
	t) O-Ring N40	2	9010 4017 00 00				
A2	Hose Joint	1	0078 0113 00 00				
A3	Silencer Assy.	1 set	0081 0053 00 99				
	a) Silencer Body	1	*				
	b) O-Ring N10	1	9010 4004 00 00				
	c) Silencer Sheet B	1	0085 0032 00 02				
	d) Silencer Cap	1	2306 0084 00 00				
A4	Snap Ring RTW-14	1	9040 1008 00 00				
A5	S.R.Pin 3X16	1 set	9250 1050 00 00				
	Upper Plate Assy.	1 set	0083 0303 01 99				
	a) Upper Plate	1	0083 0303 01 00				
	b) Ball Bearing 697	1	9100 1060 00 00				
A6	Cylinder Assy.	1 set	0093 0304 01 99				
	a) Cylinder	1	*				
	b) S.R.Pin 2X6	2	9250 1011 00 00				
A7	Rotor	1	0093 0305 00 00				
A8	Vane	6	0093 0306 01 00				
A9	Lower Plate Assy.	1 set	0083 0307 00 99				
	a) Lower Plate	1	0083 0307 00 00				
	b) Ball Bearing 6900	1	9100 1046 00 00				
	c) Pin 2.5X6	1	8055 1053 00 00				
A10	Lower Plate Spacer	1	0093 0311 00 00				



**YOKOTA EUROPE BV**  
 e-mail [info@impulsetools.com](mailto:info@impulsetools.com) <http://www.impulsetools.com>  
 P.O. BOX 362 NL-1000 AJ AMSTERDAM PHONE: 020-625 28 53 FAX: 020-625 35 69  
 Hydraulic Impulse Wrenches, Impact Wrenches, Drills, Grinders, Screw Drivers, Chippers, Pumps.

The part "\*" can not be supplied individually.  
 So please order it as a unit of assembly  
 shown by arrow mark (↑).