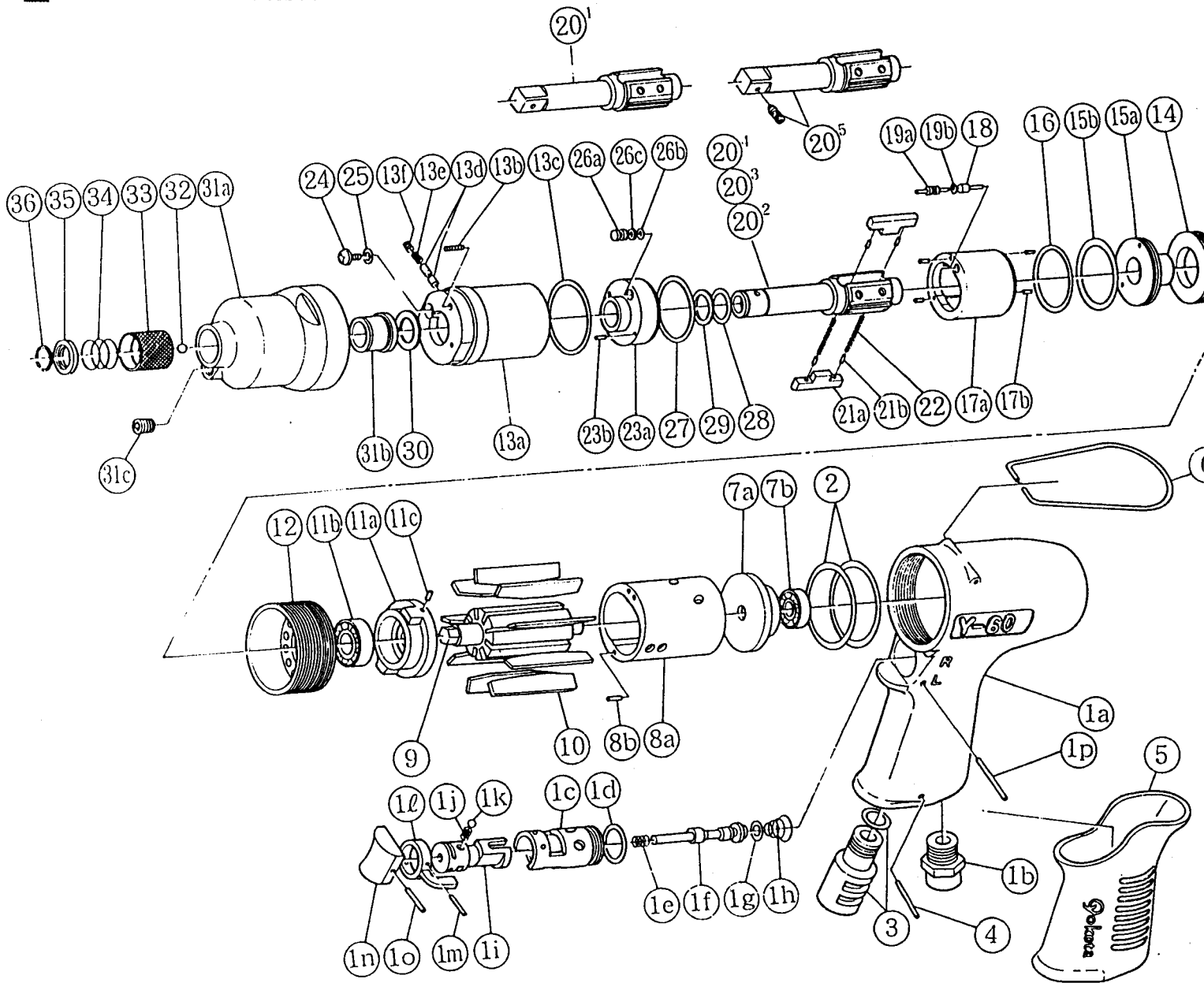


TWIN

2 BLADE IMPULSE WRENCHES

MODELS (YES. NO.)	TOOL NO.
Y-60 (02)	0259 0000 02 00
Y-60A (02)	0259 0000 02 01
Y-60B (02)	0259 0000 02 02

EXPLODED VIEW



YOKOTA EUROPA BV

P.O. BOX 392 NL-1000 AJ AMSTERDAM PHONE 020-625 29 53 FAX 020-625 35 69

Hydraulic Impulse Wrenches, Impact Wrenches, Drills, Grinders, Screwdrivers, Chippers, Scalars, Pumps.

PARTS LIST

No.	Name of Parts	Per Set	Parts No.	No.	Name of Parts	Per Set	Parts No.	
1	Motor Case Assy.	1set	0259 0011 01 99	17	Liner Assy.	1set	0081 0425 03 99	
	(a) Motor Case	1	0259 0011 00 00		(a) Liner	1	※ ↑	
	(b) Hose Joint	1	0094 0113 00 00	(b) AA Pin (2×5)	4	8051 3091 00 00		
	Throttle Bushing Assy.	1set	0136 0104 00 99	18	Relief Valve	1	0081 0245 01 00	
	(c) Throttle Bushing	1	※ ↑		19	Spring Guide (B) Assy.	1set	0081 0510 01 99
	(d) "O"Ring (N15)	1	9010 4008 00 00	(a) Spring Guide (B)		1	※ ↑	
	(e) Spring (5.2×5.5)	1	8020 1259 00 00	(b)"O"Ring (0.7×2×3.4)		1	9010 6020 00 00	
	Throttle Rod Assy.	1set	0094 0106 00 99	20 ²	Main Shaft (A) Y-60A	1	0259 0614 01 51	
	(f) Throttle Rod	1	※ ↑	20 ³	Main Shaft (B) Y-60B	1	0259 0614 01 52	
	(g) "O"Ring (No.3)	1	9010 3021 00 00	20 ⁴	Main Shaft (P) Assy.Y-60	1set	0259 0614 01 59	
	(h) Conical Spring (7.5×11.5×8)	1	8020 3058 00 00	21	Blade Assy.	2set	0259 0719 00 99	
	(i) Reverse Valve	1	0136 0005 00 00		(a) Blade	1	※ ↑	
	(j) Spring (3×4)	1	8020 1246 00 00	(b) E Pin (2×4.7)	2	8410 4091 00 00		
	(k) Ball (1/8)	1	9150 3009 00 00	22	Spring (3.3×20.5)	2	8020 1244 00 00	
	(l) Reverse Lever	1	2315 0007 00 00		23	Liner Lower Plate Assy.	1set	0081 0426 01 99
	(m) Spring Roll Pin (2×12)	1	9250 1015 00 00	(a) Liner Lower Plate		1	※ ↑	
	(n) Throttle Knob	1	2024 0153 00 00	(b) Spring Roll Pin (3×8)	1	9250 2022 00 00		
(o) Spring Roll Pin (1.5×14)	1	9250 1005 00 00	24	Oil Plug	1	0081 0010 00 00		
(p) AA Pin (3×23.8)	1	8051 3041 00 00		25	"O"Ring (N3)	1	9010 4025 00 00	
2	"O"Ring (N35.5)	2	9010 4022 00 00		26	Oil Stop Cap Assy.	1set	0081 0602 00 99
3	Silencer Assy.	1set	0094 0053 00 99			(a) Oil Stop Cap	1	※ ↑
4	G Pin (3×22)	1	8410 6023 00 00	(b)"O"Ring (N2)		1	9010 4001 00 00	
5	Rubber Grip	1	0259 0144 00 00	(c) Backup Ring (N2)	1	9090 2001 00 00		
6	Hanger	1	0004 0017 00 00	27	"O"Ring (1×25.2×27.2)	1	9010 6012 00 00	
7	Upper Plate Assy.	1set	0094 0303 00 99		28	"X"Ring (2.25×2.4×12.5)	1	9910 0001 00 00
	(a) Upper Plate	1	0094 0303 00 00	29	Backup Ring (12×16×1)	1	9090 5001 00 00	
(b) Ball Bearing (#697)	1	9100 1060 00 00	30		Washer (12.5×18×0.5)	1	8041 5011 00 00	
8	Cylinder Assy.	1set		0094 0304 00 99	31	Hammer Case Assy.	1set	0094 0401 00 99
	(a) Cylinder	1	※ ↑	(a) Hammer Case		1	0094 0401 00 00	
(b) FF Pin (2.5×6)	1	8055 1053 00 00	(b) Main Shaft Bushing	1		0081 0612 00 00		
9	Rotor	1	0094 0305 00 00	(c) Socket Plug (PT 1/16-27)	1	8210 8001 00 00		
10	Vane	9	0094 0306 00 00	Y-60A & 60B				
11	Lower Plate Assy.	1set	0259 0307 00 99	32	Ball (1/8)	1	9150 3009 00 00	
	(a) Lower Plate	1	0259 0307 00 00	33	Bit Chuck	1	2057 0414 00 00	
	(b) Ball Bearing (#6900)	1	9100 1046 00 00	34	Spring (13.5×11.2)	1	8020 1137 00 00	
	(c) FF Pin (2.5×6)	1	8055 1053 00 00	35	Spring Washer	1	2057 0419 00 00	
12	Lower Plate Spacer	1	0259 0311 00 00	36	Retaining Ring (10×1)	1	8030 1009 00 00	
13	Liner Case (A) Assy.	1set	0081 0422 03 98	Standard Accessories				
	(a) Liner Case	1	※ ↑	Hexagon Wrench (H1.5L)	1	9610 1012 00 00		
	(b) Screw (M3×8)	1	9480 2024 00 00	Hexagon Wrench (H5/32)	1	9610 3008 00 00		
	(c) "O"Ring (N30)	1	9010 4019 00 00	Optional Parts				
	(d) Rubber Plate	2	0081 0047 00 00	20 ¹	Main Shaft (3/8sq)	1	0259 0614 01 01	
	(e) Spring (2.4×6)	1	8020 1267 00 00					
	(f) Screw (M3×3)	1	9480 2028 00 00					
14	Liner Cap	1	0081 0423 01 00					
15	Liner Upper Plate Assy.	1set	0081 0424 01 99					
	(a) Liner Upper Plate	1	※ ↑					
	(b) "O"Ring (N25)	1	9010 4027 00 00					
16	"O"Ring (1.5×26.5×29.5)	1	9010 6023 00 00					

The part marked "※" can not be supplied individually. So please order it as a unit of assembly shown by arrow mark (↑).