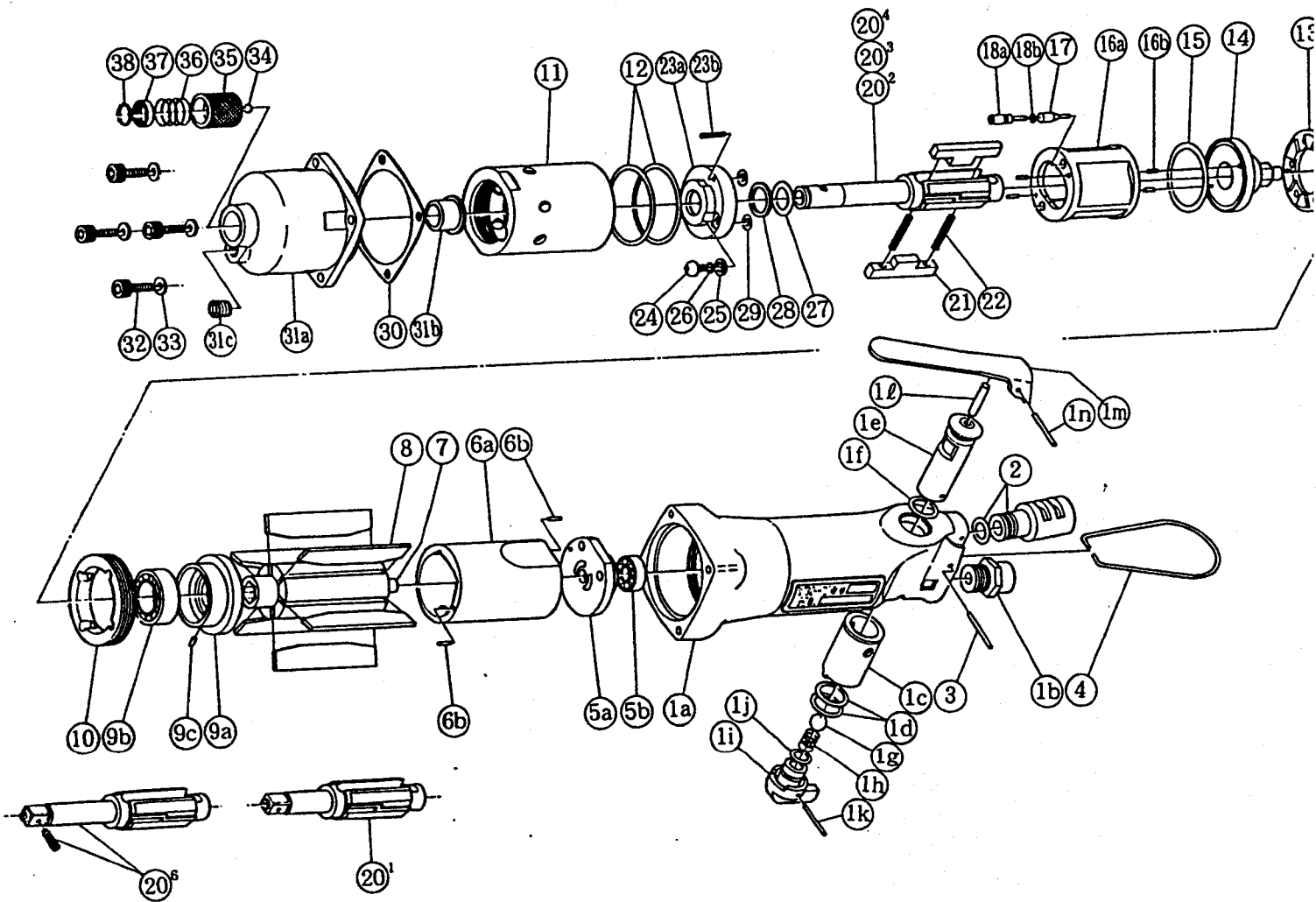


## TWIN 2 BLADE IMPULSE WRENCHES

MODEL (YES. NO.)	TOOL NO.
YX - 700S (03)	0132 0000 03 04
YX - 700SA (03)	0132 0000 03 01
YX - 700SB (03)	0132 0000 03 02

### EXPLODED VIEW



# YOKOTA EUROPA BV

P.O. BOX 392 NL - 1000 AJ AMSTERDAM PHONE 020 - 625 29 53 FAX 020 - 625 35 69

Hydraulic Impulse Wrenches, Impact Wrenches, Drills, Grinders, Screwdrivers, Chippers, Scalars, Pumps.

# 部 品 表

No.	Name of Parts	Per Set	Parts No.	No.	Name of Parts	Per Set	Parts No.
1	Motor Case Assy.	1set	0132 0011 00 99	19	Not Used		
	(a) Motor Case	1	0132 0011 00 00	20 <sup>2</sup>	Main Shaft (A) YX-700SA	1	0129 0614 03 51
	(b) Hose Joint	1	0237 0113 00 00	20 <sup>3</sup>	Main Shaft (B) YX-700SB	1	0129 0614 03 52
	(c) Reverse Bushing	1	0080 0004 00 00	20 <sup>6</sup>	Main Shaft (P) Assy.YX-700S	1set	0129 0614 05 59
	(d) "O"Ring	2	9010 4008 00 00	21	Blade	2	0129 0719 03 00
	Reverse Valve Assy.	1set	0080 0050 00 99	22	Spring	2	8020 1310 00 00
	(e) Reverse Valve	1	* ↑	23	Liner Lower Plate (A) Assy.	1set	0077 0426 03 98
	(f) "O"Ring	1	9010 4006 00 00		(a) Liner Lower Plate	1	* ↑
	(g) Ball	1	9150 4002 00 00		(b) Screw	1	9480 2026 00 00
	(h) Spring	1	8020 1066 00 00	24	Oil Plug	1	0048 0010 00 00
	Reverse Lever Assy.	1set	0932 0007 00 99	25	Washer	1	8040 1073 00 00
	(i) Reverse Lever	1	* ↑	26	"O"Ring	1	9010 4021 00 00
	(j) "O"Ring	1	9010 1006 00 00	27	"O"Ring	1	9010 6014 00 00
	(k) Spring Roll Pin	1	9250 1021 00 00	28	Backup Ring	1	9090 1005 00 00
	(l) AA Pin	1	8051 3057 00 00	29	"O"Ring	1	9010 4033 00 00
	(m) Throttle Lever	1	0931 0110 00 00	30	S - Packing (D)	1	0051 0003 00 04
	(n) Spring Roll Pin	1	9250 5001 00 00	31	Hammer Case Assy.	1set	0132 0401 00 99
	2	Sirencer Assy.	1set		(a) Hammer Case	1	0132 0401 00 00
	3	Spring Roll Pin	1		(b) Main Shaft Bushing	1	0048 0612 00 00
4	Hanger	1	0004 0017 00 00	(c) Socket Plug	1	8210 5001 00 00	
5	Upper Plate Assy.	1set	0080 0303 02 99	32	Hex. Socket Bolt	4	8070 3008 00 00
	(a) Upper Plate	1	0080 0303 02 00	33	Spring Washer	4	9200 3004 00 00
	(b) Ball Bearing	1	9100 1003 00 00	YX-700SA & 700SB			
6	Cylinder Assy.	1set	0132 0304 01 99	34	Ball	1	9150 3009 00 00
	(a) Cylinder	1	* ↑	35	Bit Chuck	1	2057 0414 00 00
	(b) Spring Roll Pin	2	9250 1011 00 00	36	Spring	1	8020 1137 00 00
7	Rotor	1	0123 0305 01 00	37	Spring Washer	1	2057 0419 00 00
8	Vane	6	0123 0306 00 00	38	Retaining Ring	1	8030 1009 00 00
9	Lower Plate Assy.	1set	0132 0307 01 99	Optional Parts			
	(a) Lower Plate	1	0132 0307 01 00	20 <sup>1</sup>	Main Shaft	1	0129 0614 04 01
	(b) Ball Bearing	1	9100 1036 00 00				
	(c) FF Pin	1	8055 1053 00 00				
10	Lower Plate Spacer	1	0083 0311 00 00				
11	Liner Case	1	0129 0422 00 00				
12	"O"Ring	2	9010 4016 00 00				
13	Liner Cap	1	0048 0423 00 00				
14	Liner Upper Plate	1	0077 0424 00 00				
15	"O"Ring	1	9010 4014 00 00				
16	Liner Assy.	1set	0129 0425 02 99				
	(a) Liner	1	* ↑				
	(b) AA Pin	4	8051 3094 00 00				
17	Relief Valve	1	0129 0245 00 00				
18	Spring Guide (B) Assy.	1set	0129 0510 00 99				
	(a) Spring Guide (B)	1	* ↑				
	(b) "O"Ring	1	9010 4001 00 00				

The part marked "\*" can not be supplied individually. So please order it as a unit of assembly shown by arrow mark (↑).