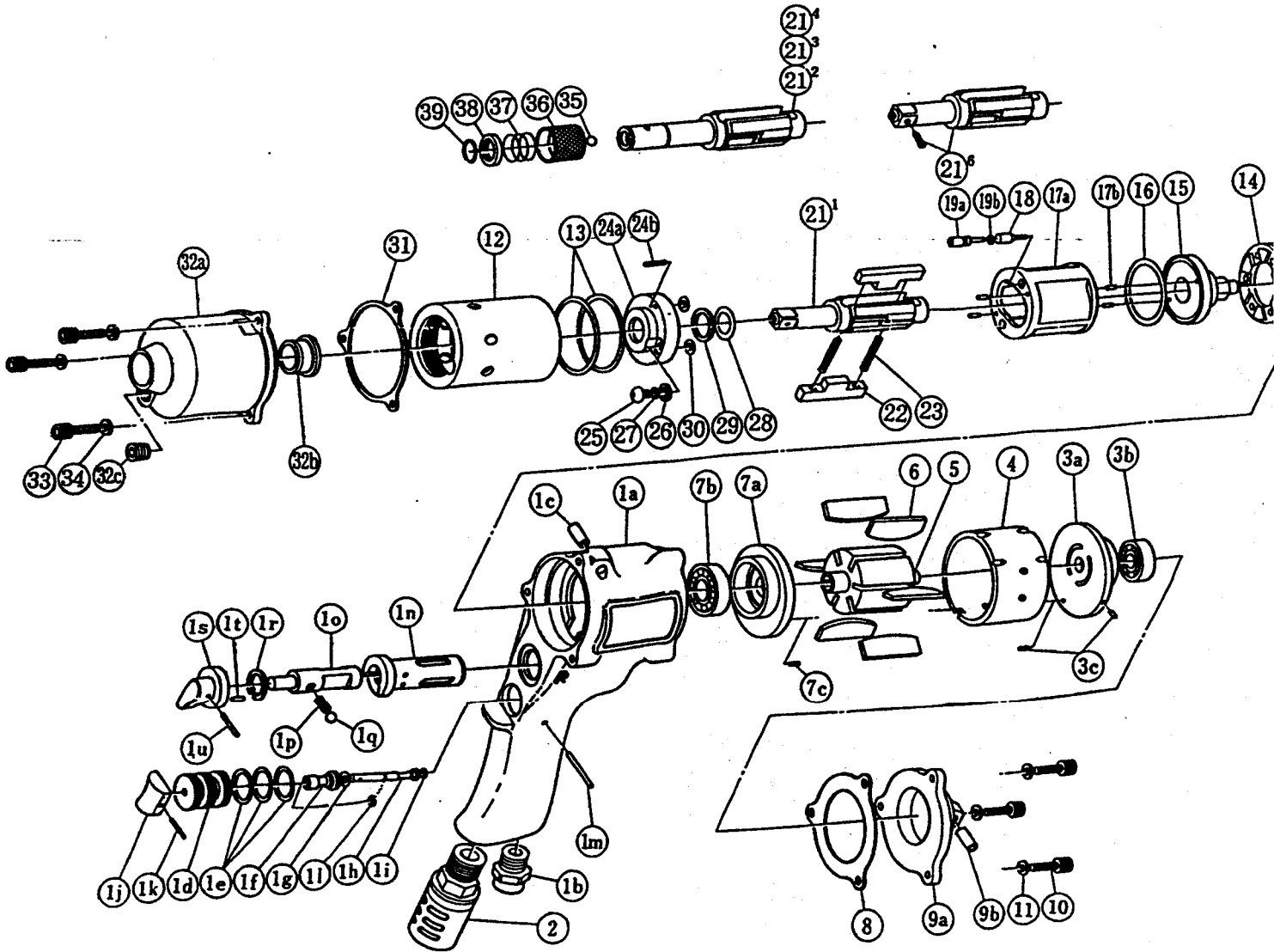


**yokota**  
FA SYSTEM & AIR TOOLS

TWIN  
**2 BLADE IMPULSE WRENCHES**

MODEL (YES. NO.)	TOOL NO.
YX - 700 (05)	0129 0000 05 04
YX - 700A (05)	0129 0000 04 01
YX - 700B (05)	0129 0000 04 02

■ EXPLODED VIEW



**YOKOTA EUROPA BV**

P.O. BOX 392 NL-1000 AJ AMSTERDAM PHONE 020-625 29 53 FAX 020-625 35 69

Hydraulic Impulse Wrenches, Impact Wrenches, Drills, Grinders, Screwdrivers, Chippers, Scalars, Pumps.

# 部 品 表

No.	Name of Parts	Per Set	Parts No.	No.	Name of Parts	Per Set	Parts No.
1	Motor Case Assy.	1set	0129 0011 00 99	13	"O"Ring	2	9010 4016 00 00
	(a) Motor Case	1	0122 0011 01 00	14	Liner Cap	1	0048 0423 00 00
	(b) Hose Joint	1	0237 0113 00 00	15	Liner Upper Plate	1	0077 0424 00 00
	(c) Spring Roll Pin	1	9250 1083 00 00	16	"O"Ring	1	9010 4014 00 00
	Throttle Bushing Assy.	1set	2058 0104 00 99	17	Liner Assy.	1set	0129 0425 02 99
	(d) Throttle Bushing	1	* ↑	(a) Liner	1	* ↑	
	(e) "O"Ring	3	9010 4008 00 00	(b) AA Pin	4	8051 3094 00 00	
	Throttle Rod Bushing Assy.	1set	0078 0105 00 99	18	Relief Valve	1	0129 0245 00 00
	(f) Throttle Rod Bushing	1	* ↑	19	Spring Guide (B) Assy.	1set	0129 0510 00 99
	(g) "O"Ring	1	9010 3021 00 00	(a) Spring Guide (B)	1	* ↑	
	Throttle Rod Assy.	1set	2058 0106 00 99	(b) "O"Ring	1	9010 4001 00 00	
	(h) Throttle Rod	1	* ↑	20	Not Used		
	(i) "O"Ring	1	9010 4001 00 00	21 <sup>2</sup>	Main Shaft (A) YX-700A	1	0129 0614 03 51
	(j) Throttle Knob	1	2024 0153 00 00	21 <sup>3</sup>	Main Shaft (B) YX-700B	1	0129 0614 03 52
	(k) Spring Roll Pin	1	9250 1005 00 00	21 <sup>6</sup>	Main Shaft (P) Assy.YX-700	1set	0129 0614 05 59
	(l) Snap Ring	1	9040 5008 00 00	22	Blade	2	0129 0719 02 00
	(m) G Pin	1	8410 6024 00 00	23	Spring	2	8020 1306 00 00
	(n) Reverse Bushing	1	0217 0004 00 00	24	Liner Lower Plate (A) Assy.	1set	0077 0426 03 98
	(o) Reverse Valve	1	0217 0005 00 00	(a) Liner Lower Plate	1	* ↑	
	(p) Spring	1	8020 1016 00 00	(b) Screw	1	9480 2026 00 00	
	(q) Ball	1	9150 3005 00 00	25	Oil Plug	1	0048 0010 00 00
(r) Snap Ring	1	9040 3002 00 00	26	Washer	1	8040 1073 00 00	
Reverse Lever Assy.	1set	0237 0007 00 99	27	"O"Ring	1	9010 4021 00 00	
(s) Reverse Lever	1	* ↑	28	"O"Ring	2	9010 6014 00 00	
(t) Spring Roll Pin	1	9250 1011 00 00	29	Backup Ring	1	9090 1005 00 00	
(u) Spring Roll Pin	1	9250 1015 00 00	30	"O"Ring	2	9010 4033 00 00	
2	Silencer Assy.	1set	3048 0053 02 99	31	S-Packing	1	0048 0003 00 02
3	Upper Plate Assy.	1set	0945 0303 00 99	32	Hammer Case Assy.	1set	0122 0401 01 99
	(a) Upper Plate	1	0945 0303 00 00	(a) Hammer Case	1	0122 0401 01 00	
	(b) Ball Bearing	1	9100 1004 00 00	(b) Main Shaft Bushing	1	0048 0612 00 00	
	(c) Spring Roll Pin	2	9250 6001 00 00	(c) Socket Plug	1	8210 2001 00 00	
4	Cylinder	1	0122 0304 00 00	33	Hex. Socket Bolt	3	8070 3008 00 00
5	Rotor	1	0128 0305 00 00	34	Spring Washer	3	9200 3004 00 00
6	Vane	6	0122 0306 00 00	YX-700A & 700B			
7	Lower Plate Assy.	1set	0945 0307 00 99	35	Ball	1	9150 3009 00 00
	(a) Lower Plate	1	0945 0307 00 00	36	Bit Chuck	1	2057 0414 00 00
	(b) Ball Bearing	1	9100 1036 00 00	37	Spring	1	8020 1137 00 00
	(c) Spring Roll Pin	1	9250 6001 00 00	38	Spring Washer	1	2057 0419 00 00
8	S-Packing	1	0122 0003 00 01	39	Retaining Ring	1	8030 1009 00 00
9	Motor Case Cover Assy.	1set	0122 0001 00 99	Optional Parts			
	(a) Motor Case Cover	1	* ↑	21 <sup>1</sup>	Main Shaft	1	0129 0614 04 01
	(b) Spring Roll Pin	1	9250 1083 00 00				
10	Hex. Socket Bolt	3	8070 3008 00 00				
11	Spring Washer	3	9200 3004 00 00				
12	Liner Case	1	0129 0422 00 00				

The part marked "\*" can not be supplied individually. So please order it as a unit of assembly shown by arrow mark (↑).