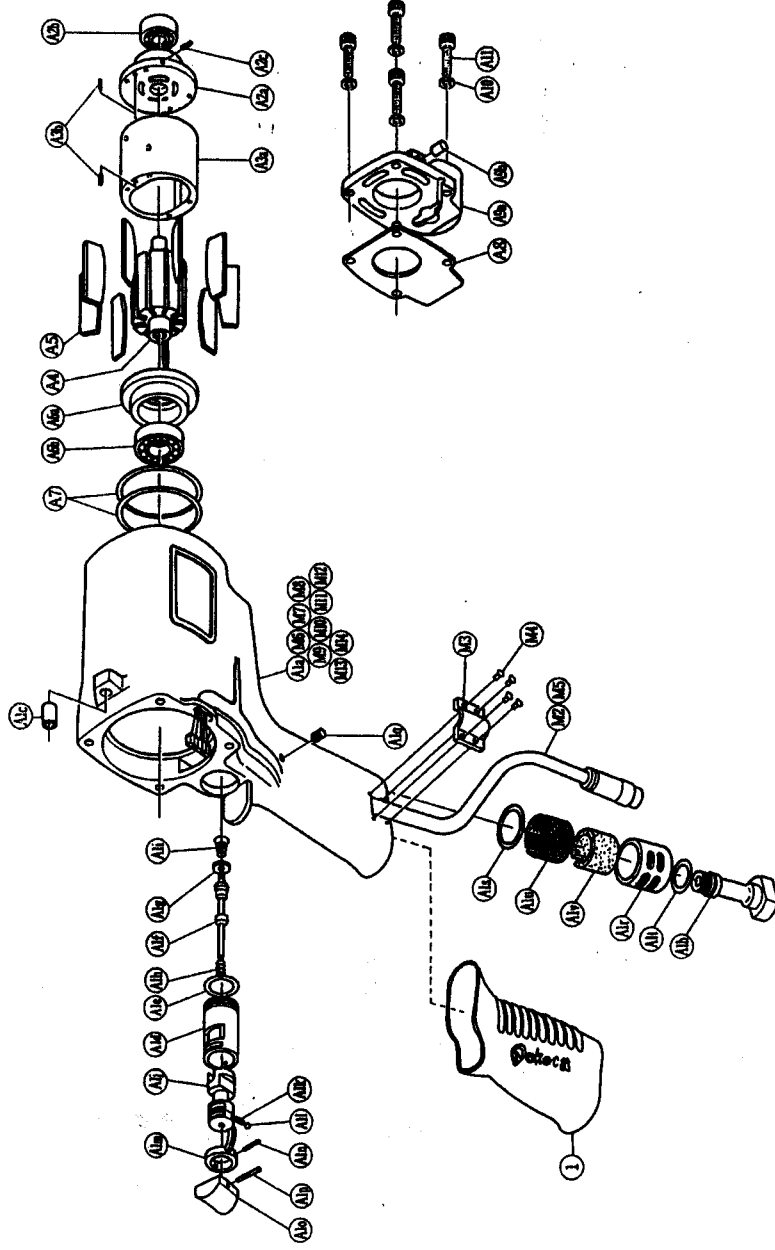


# yokota

With built-in torque sensor  
**2 BLADE - SYSTEM WRENCH**

MODEL (YES. No.)	TOOL No.
Y-E90 (01)	0146 0000 01 00

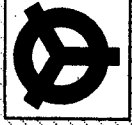
■ Exploded View of Motor Case



## Parts for Motor Case

No.	Name of Parts	Per Set	Parts No.
M	Motor Case Assy.	1set	0146 0011 00 99
M1	Motor Case (A) Assy.	1set	0146 0011 00 98
A1	Motor Case (B) Assy.	1set	0146 0011 00 97
	(a) Motor Case	1	0146 0011 00 00
	(b) Hose Joint	1	0141 0113 00 00
	(c) Spring Roll Pin (6 x 10)	1set	9250 1082 00 00
	Throttle Bushing Assy.	1	0141 0104 01 99
	(a) O Ring	1	9010 4009 00 00
	Throttle Rod Assy.	1	0141 0106 02 99
	(f) Throttle Rod	1	9010 3021 00 00
	(g) O Ring (No.3)	1	8020 1294 00 00
	(h) Spring (5.2 x 40)	1	8020 3061 00 00
	(i) Conical Spring (5 x 11.5 x 12)	1	0141 0005 01 00
	(j) Reverse Valve (3 x 4)	1	8020 1246 00 00
	(k) Spring (1/8)	1	9150 3009 00 00
	(l) Ball	1	2315 0007 00 00
	(m) Reverse Lever	1	9250 1015 00 00
	(n) Spring Roll Pin (2 x 12)	1	2024 0153 00 00
	(o) Throttle Knob	1	9250 1005 00 00
	(p) Spring Roll Pin (1.5 x 14)	1	8051 3041 00 00
	(q) AA Pin (3 x 23.8)	1	0141 0016 00 00
	(r) Exhaust Cover (N20)	1	9010 4008 00 00
	(s) O Ring (N15)	1	0141 0032 00 01
	(t) O Ring	1	0141 0032 00 02
	(u) Silencer Sheet (A)	1set	0141 0303 01 99
	(v) Silencer Sheet (B)	1	0141 0303 01 00
A2	Upper Plate Assy.	1	0141 0305 01 00
	(a) Upper Plate	9	0141 0305 01 00
	(b) Ball Bearing (6900)	1	9100 1046 00 00
	(c) AA Pin (2 x 6.8)	1	8051 3017 00 00
A3	Cylinder Assy.	1set	0141 0304 01 99
	(a) Cylinder	2	8055 1053 00 00
	(b) FF Pin (2.5 x 6)	1	0141 0305 01 00
A4	Rotor	1	0141 0306 01 00
A5	Vane	9	0141 0306 01 00
A6	Lower Plate Assy.	1set	0141 0307 01 99
	(a) Lower Plate	1	0141 0307 01 00
	(b) Ball Bearing (6902)	1	9100 1036 00 00
A7	O Ring (N46)	2	9010 4032 00 00
A8	S-Packing (A)	1	0146 0003 00 01
A9	Motor Case Cover Assy.	1set	0146 0001 00 99
	(a) Motor Case Cover	1	9250 1082 00 00
	(b) Spring Roll Pin (6 x 10)	4	9200 3005 00 00
A10	Spring Washer (M6)	4	8070 3052 00 00
A11	Hex. Socket Bolt (M5 x 1.6)	4	0146 0502 00 99
M2	Cable Assy.	1	0280 0948 00 00
M3	Card Cover	1	

The part "※" can not be supplied individually. So please order it as a unit of assembly shown by arrow mark (↑).



# YOKOTA EUROPA BV

P.O. BOX 382 NL-1000 AJ AMSTERDAM PHONE 020-625 29 53 FAX 020-625 35 00  
 Hydraulic Impact Wrenches, Drills, Grinders, Screw Drivers, Chisels, Sockets, Power

Parts for Liner Case

No.	Name of Parts	Per Set	Parts No.
L	Liner Case Assy.	1set	0146 0422 01 99
L1	Liner Case	1	0146 0422 00 00
L2	O Ring (N42)	2	9010 4018 00 00
L3	Liner Cap	1	0141 0423 01 00
L4	Liner Upper Plate (N36)	1	0141 0422 00 00
L5	O Ring	1	9010 4015 00 00
L6	Liner Assy.	1set	0141 0425 01 99
	(a) Liner	1	※
	(b) AA Pin (3 x 5)	4	8651 3094 00 00
L7	Relief Valve	1	0141 0245 00 00
L8	Spring Guide Assy.	1set	0146 0510 00 99
	(a) Spring Guide	1	※
	(b) O Ring (N2)	1	9010 4001 00 00
L9	Liner Shaft	1	0146 0796 01 00
L10	Blade (4 x 34)	2	8020 1314 00 00
L11	Spring (2.7 x 34)	2	8020 1314 00 00
L12	Liner Lower Plate (A) Assy.	1set	0146 0426 01 98
	(a) Liner Lower Plate	1	※
	(b) Nitron Bushing (M3)	1	0078 0431 01 00
	(c) Washer (4.3 x 6.6 x 2.2)	1	8040 1136 00 00
	(d) Adjust Bolt (M3 x 15)	1	0090 0322 01 00
L13	O Ring Plug (3 x 6)	1	9250 2001 00 00
	(a) Spring Roll Pin (M4)	1	0048 0010 00 00
L14	Washer (6.5 x 8.5 x 1.1)	1	8040 1073 00 00
L15	O Ring (N4)	1	9010 4021 00 00
L16	O Ring (N5)	1	9010 4050 00 00
L17	O Ring (P16)	1	9010 1047 00 00
L18	Backup Ring (16 x 19.8 x 1.5)	1	9090 1018 00 00
2	S-Packing (B)	1	0146 0003 00 02
3	Hex Socket Bolt (M5 x 18)	4	8070 3052 00 00
4	Spring Washer (M5)	4	9200 3005 00 00

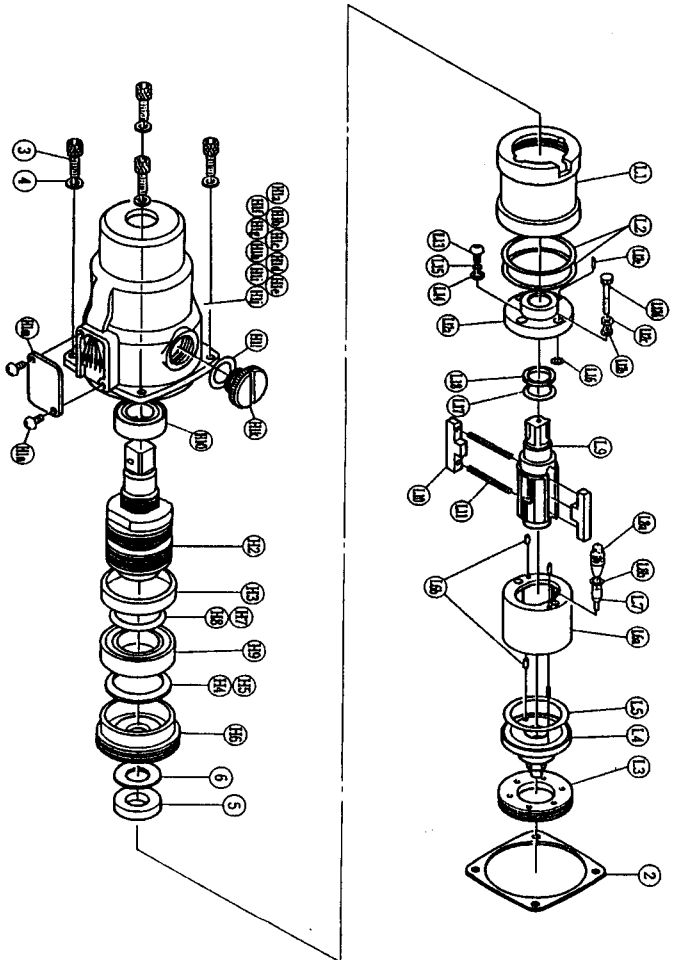
The part "※" can not be supplied individually.  
So please order it as a unit of assembly shown by arrow mark (↑).



With built-in torque sensor  
**2 BLADE · SYSTEM WRENCH**

MODEL (YES, No.)	TOOL No.
Y-E 9 0 (0 1)	0146 0000 01 00

Exploded View of Liner Case and Hammer Case



Parts for Hammer Case

No.	Name of Parts	Per Set	Parts No.
H	Hammer Case Assy.	1set	0146 0401 02 99
H1	Hammer Case (A) Assy.	1set	0146 0401 01 98
	(a) Hammer Case	1	※
	(b) Core (A) Assy.	1set	※
	(c) Core (B)	1	※
	(d) Spacer (A)	1	※
	(e) Core (C)	1	※
	(f) Core (D) Assy.	1set	※
	(g) Screw (M4 x 0.7 x 5)	1	※
	(h) Tube (φ 1 x 30)	2	※
	(i) Tube (φ 1.5 x 9)	4	※
	(j) Micro Connector (OX-202)	4	※
	(k) Regulator Cap	1	0143 0204 00 00
	(l) O Ring (N12)	1	9010 4005 00 00
	(m) Cover Plate	1	0083 0014 00 00
	(n) Screw (M4 x 8)	2	9410 2004 00 00
	(o) Ball Bearing (6903ZZ)	1	9100 5025 00 00
H2	Main Shaft Assy.	1set	0146 0614 01 99
H3	Spacer (C)	1	0146 0119 00 03
H4	C-Packing (35 x 40.5 x 0.1)	1	8010 1291 00 00
H5	C-Packing (35 x 40.5 x 0.2)	1	8010 1292 00 00
H6	Bearing Case	1	0127 0650 00 00
H7	C-Packing (25 x 29.5 x 0.1)	1	8010 1282 00 00
H8	C-Packing (25 x 29.5 x 0.2)	1	8010 1286 00 00
H9	Ball Bearing (6903ZZ)	1	9100 5025 00 00
5	Washer (16.5 x 23 x 3.8)	1	8040 8023 00 00
6	Washer (14.6 x 26 x 1)	1	8041 5013 00 00

Standard Accessories			
	Touch Joint (1/4-07)	1	9690 0007 00 00
	TF Pin (φ 2 x 90)	1	8051 6001 00 00

The part "※" can not be supplied individually.  
So please order it as a unit of assembly shown by arrow mark (↑).



**YOKOTA EUROPA BV**

P.O. BOX 392 NL-1000 AJ AMSTERDAM PHONE 020-625 28 53 FAX 020-625 35 69  
Hydraulic, Air Tools, Wrenches, Impact, Wrenches, Drills, Grinders, Screw drivers, Clippers, Saws, Pumps.