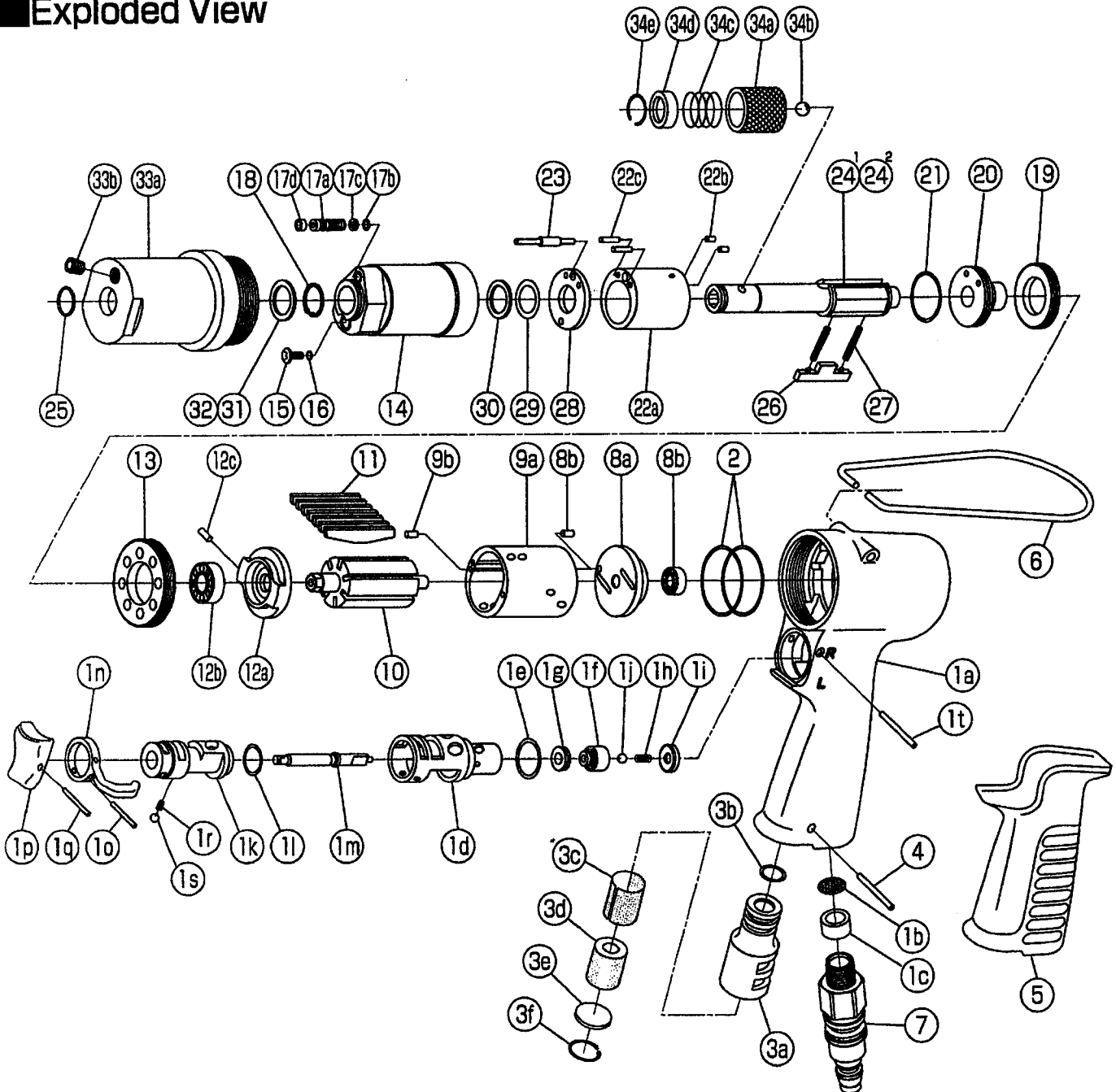


IMPULSE WRENCH

MODEL (YES.No.)	TOOL No.
Y-41A (02)	0161 0000 0201
Y-41B (02)	0161 0000 0202

Exploded View



YOKOTA EUROPA BV

P.O. BOX 392 NL-1000 AJ AMSTERDAM PHONE 020-5318800 FAX 020-5318808

e-mail: info@impulsetools.com http://www.impulsetools.com

Hydraulic Impulse Wrenches, Impact Wrenches, Drills, Grinders, Screw Drivers, Chippers, Scalars, Pumps.

Parts List

No.	Name of Parts	Per Set	Parts No.	No.	Name of Parts	Per Set	Parts No.
1	Motor Case Assy.	1set	0161 0011 00 99	17	Adjust Bolt Assy.	1set	0095 0522 01 99
	(a) Motor Case	1	* ↑		(a) Adjust Bolt	1	* ↑
	(b) Strainer	1	0259 0111 00 00		(b) O - Ring (N2)	1	9010 4001 00 00
	(c) Washer (7.5×11×5)	1	8042 2003 00 00		(c) Back-up Ring (N2)	1	9090 2001 00 00
	(d) Throttle Bushing	1	0158 0104 00 00	(d) Nylon Bushing	1	0270 0431 00 00	
	(e) O - Ring (N16)	1	9010 4009 00 00	18 Retaining Ring (13.5×0.8)	1	8030 1067 00 00	
	Throttle Valve Assy.	1set	0160 0108 00 99	19 Liner Cap	1	0095 0423 00 00	
	(f) Throttle Valve	1	* ↑	20 Liner Upper Plate	1	0095 0424 02 00	
	(g) Rubber Pad	1	2331 0678 00 00	21 O - Ring (N20)	1	9010 4010 00 00	
	(h) Spring (3.3×9.6)	1	8020 1317 00 00	22 Liner Assy.	1set	0095 0425 00 99	
	(i) Throttle Bushing Cap	1	2331 0160 00 00	(a) Liner	1	* ↑	
	(j) Ball (3.5mm)	1	9150 2006 00 00	(b) Pin (2×3.5)	2	8052 1027 00 00	
	(k) Reverse Valve	1	0158 0005 00 00	(c) Pin AA (2×9)	2	8052 3001 00 00	
	(l) O - Ring (N12.5)	1	9010 4006 00 00	23 Relief Valve	1	0095 0245 00 00	
	(m) Throttle Rod	1	0158 0106 00 00	24 ¹ Main Shaft (A-type)	1	0095 0614 00 51	
	(n) Reverse Lever	1	0158 0007 00 00	25 Snap Ring (STW-11)	1	9040 2003 00 00	
	(o) Spring Pin (2×12)	1	9250 1015 00 00	26 Blade	1	0095 0719 02 00	
	(p) Throttle Knob	1	0158 0153 00 00	27 Spring (3.1×14)	2	8020 1260 00 00	
	(q) Spring Pin (1.5×14)	1	9250 1005 00 00	28 Liner Lower Plate	1	0095 0426 00 00	
	(r) Spring (3×4)	1	8020 1246 00 00	29 O - Ring (2.3×10.8×15.4)	1	9010 6025 00 00	
(s) Ball (1/8)	1	9150 3009 00 00	30 Back-up Ring (11×15×0.8)	1	9090 1011 00 00		
(t) Pin (2.5×22)	1	8055 1062 00 00	31 Washer (11.5×16×0.3)	0~1	8041 5026 00 00		
2 O - Ring (N28)	2	9010 4029 00 00	32 Washer (11.5×16×0.5)	0~1	8041 5022 00 00		
3	Silencer Assy.	1set	0161 0053 00 99	33 Hammer Case Assy.	1set	0161 0401 00 99	
	(a) Silencer Body	1	* ↑	(a) Hammer Case	1	0161 0401 00 00	
	(b) O - Ring (N10)	1	9010 4004 00 00	(b) Socket Plug (1/32)	1	8210 6001 00 00	
	(c) Silencer Sheet (A)	1	2306 0032 00 01	34	Bit Chuck Assy.	1	2057 0414 00 99
	(d) Silencer Sheet (B)	1	0161 0032 00 02		(a) Bit Chuck	1	2057 0414 00 00
	(e) Silencer Cap	1	2306 0084 00 00		(b) Ball (1/8)	1	9150 3009 00 00
(f) Snap Ring (RTW-14)	1	9040 1006 00 00	(c) Spring (13.5×11.2)		1	8020 1137 00 00	
4 Spring Pin (3×16)	1	9250 1050 00 00	(d) Spring Washer		1	2057 0419 00 00	
5 Rubber Grip	1	0158 0144 00 00	(e) Retaining Ring (10×1)	1	8030 1009 00 00		
6 Hangar	1	0004 0017 00 00	Parts for Y-41B				
7 Swivel Joint	1	9690 0015 00 00	24 ² Main Shaft (B-type)	1	0095 0614 00 52		
8	Upper Plate Assy.	1set	0095 0303 00 99	Standard Accessories			
	(a) Upper Plate	1	0095 0303 00 00	Hex. Wrench (H2×65×65)	1	9610 1013 00 00	
	(b) Ball Bearing (605)	1	9100 1001 00 00	Protector	1	0161 0029 00 00	
9	Cylinder Assy.	1set	0095 0304 00 99				
	(a) Cylinder	1	* ↑				
	(b) Pin (2×5)	2	8051 1037 00 00				
10 Rotor	1	0095 0305 00 00					
11 Vane	7	0161 0306 00 00					
12	Lower Plate Assy.	1set	0095 0307 00 99				
	(a) Lower Plate	1	0095 0307 00 00				
	(b) Ball Bearing (697)	1	9100 1060 00 00				
	(c) Pin (2×5)	1	8051 1037 00 00				
13 Lower Plate Spacer	1	0095 0311 00 00					
14 Liner Case	1	0095 0422 02 00					
15 Oil Plug	1	0081 0010 01 00					
16 O - Ring (N3)	1	9010 4025 00 00					

The part "*" can not be supplied individually.
So please order it as a unit of assembly shown by arrow mark (↑).