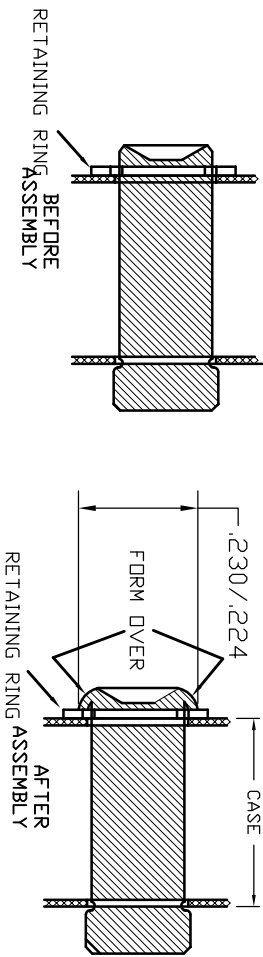


816799—THIS PIN IS FORMED OVER CUSTOMER MUST GRIND OFF FORMED END & INSTALL THIS PIN FORMING THE HEAD OVER THE RETAINING RING AS SHOWN.



857046—INSTRUCTIONS  
 811236—Tang Ass'y. (Includes Tang, Pin & spring adapter, & Adj. screw)

LEGEND: ( ) = Quantity/Tool  
 \* = Quantity/Multi-Pak



**STURTEVANT**  
 TORQUE MEASUREMENT SYSTEMS  
 DIVISION OF RYSON CORPORATION

THIS PRINT AND ALL INFORMATION APPEARING THEREON IS THE PROPERTY OF STURTEVANT/RICHMONT. NEITHER THE PRINT NOR THE INFORMATION THEREON MAY BE REPRODUCED OR USED IN ANY MANNER WHATSOEVER, IN WHOLE OR IN PART, WITHOUT THE WRITTEN PERMISSION OF STURTEVANT/RICHMONT.

PART DESCRIPTION  
**CCM 750I (IN./LBS)**  
 DIAGRAM NO. & REV.  
**810766-G**