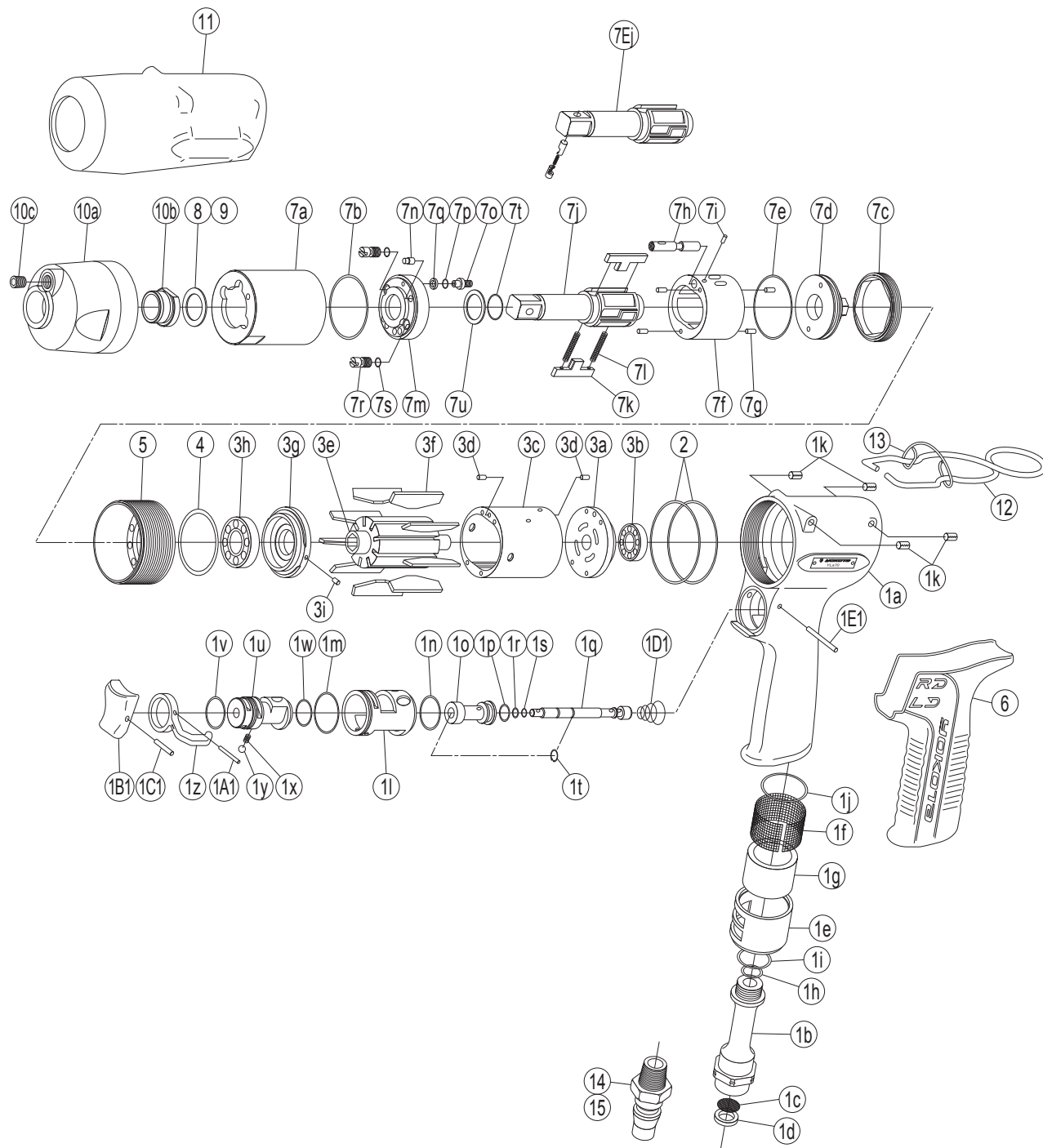


IMPULSE WRENCH

MODEL (YES.No.)	TOOL No.
YLa110 (00)	0190 0000 0000
YLa110E (00)	0190 0000 0009

Exploded View



Parts List

No.	Name of Parts	Per Set	Parts No.	No.	Name of Parts	Per Set	Parts No.
1	Motor Case Assy.	1set	0190 0011 02 99	7	Liner Case Assy.	1set	0190 0422 04 99
	(a) Motor Case	1	※ ↑		(a) Liner Case	1	0190 0422 01 00
	Hose Joint Assy.	1set	0187 0113 00 99		(b) O-Ring (1.6x35.1x38.3)	1	9010 6037 00 00
	(b) Hose Joint	1	※ ↑		(c) Liner Cap	1	0187 0423 00 00
	(c) Strainer	1	0259 0111 00 00		(d) Liner Upper Plate	1	0187 0424 00 00
	(d) Washer (7.5x11x2)	1	8042 2008 00 00		(e) O-Ring (JASO1033)	1	9011 3004 00 00
	(e) Exhaust Cover	1	0016 00 00		Liner Assy.	1set	0187 0425 02 99
	(f) Silencer Sheet (A)	1	0141 0032 00 01		(f) Liner	1	※ ↑
	(g) Silencer Sheet (D)	1	0187 0032 00 04		(g) Pin AA (3x5)	4	8052 1031 00 00
	(h) O-Ring (S10)	1	9010 4004 00 00		(h) Relief Valve	1	0187 0245 00 00
	(i) O-Ring (S16)	1	9010 4009 00 00		(i) Pin (2x4)	1	8051 1035 00 00
	(j) O-Ring (1x20x22)	1	9010 6043 00 00		(j) Main Shaft	1	0190 0614 02 01
	(k) Spring Pin (5x8)	4	9250 2027 00 00		(k) Blade	2	0187 0719 00 00
	Throttle Assy.	1set	0187 0186 02 99		(l) Spring (3.55x31.5)	2	8020 1350 00 00
	(l) Throttle Bushing	1	0187 0104 00 00		Liner Lower Plate Assy.	1set	0190 0426 01 99
	(m) O-Ring (0.7x19.6x21)	1	9010 6038 00 00		(m) Liner Lower Plate	1	0190 0426 00 00
	(n) O-Ring (S18)	1	9010 4023 00 00		(n) Dowel Pin	1	0188 0308 00 00
	Throttle Rod Bushing Assy.	1set	0187 0105 00 99		(o) Adjust Bolt	1	0188 0522 00 00
	(o) Throttle Rod Bushing	1	※ ↑		(p) O-Ring (N2)	1	9010 4001 00 00
	(p) O-Ring (P8)	1	9010 1048 00 00		(q) Back-up Ring (3.2x5x1)	1	9090 1028 00 00
	Throttle Rod Assy.	1set	0187 0106 01 99		(r) Oil Plug	2	0181 0010 00 00
(q) Throttle Rod	1	※ ↑	(s) O-Ring (N2)	2	9010 4001 00 00		
(r) O-Ring (0.5x3.7x4.7)	1	9010 6034 00 00	(t) O-Ring (P16)	1	9010 1047 00 00		
(s) O-Ring (S4)	1	9010 4058 00 00	(u) Back-up Ring (16x19.8x1)	1	9090 1029 00 00		
(t) Snap Ring (ETW-2.8)	1	9040 5008 00 00	8 * Washer (16.5x22x0.3)	1	8041 5038 00 00		
(u) Reverse Valve	1	0187 0005 02 00	9 * Washer (16.5x22x0.5)	1	8041 5039 00 00		
(v) O-Ring (0.6x16x17.2)	1	9010 6039 00 00	10 Hammer Case Assy.	1set	0190 0401 00 99		
(w) O-Ring (S15)	1	9010 4008 00 00	(a) Hammer Case	1	0190 0401 00 00		
(x) Spring (3x4)	1	8020 1246 00 00	(b) Main Shaft Bushing	1	0190 0612 00 00		
(y) Ball (1/8)	1	9150 3009 00 00	(c) Socket Plug (1/16-27)	1	8210 4001 00 00		
(z) Reverse Lever	1	2331 0007 00 00	Parts for YLa110E				
(A1) Spring Pin (2x12)	1	9250 1015 00 00	7E Liner Case Assy.	1set	0190 0422 00 97		
(B1) Throttle Knob	1	0158 0153 00 00	(j) Main Shaft Assy. (E-type)	1set	0190 0614 00 98		
(C1) Spring Pin (1.5x14)	1	9250 1005 00 00	Standard Accessories				
(D1) Conical Spring (5.24x7.6x7)	1	8020 3070 00 00	11 Protector	1	0190 0029 00 00		
(E1) Pin (2x22)	1	8055 1050 00 00	12 Hanger	1	0099 0017 00 00		
2 O-Ring (S42)	2	9010 4018 00 00	13 Hanger Clip	1	0190 1801 00 00		
3	Motor Assy.	1set	0187 0305 00 99	14 * Touch Joint	1	9690 0002 00 00	
	Upper Plate Assy.	1set	0187 0303 01 99	15 * Hose Nipple Assy. (XA-352)	1set	8110 1004 00 99	
	(a) Upper Plate	1	0187 0303 00 00	Hex. Wrench (H1.5x65x65)	1	9610 1012 00 00	
	(b) Ball Bearing (6900)	1	9100 1078 00 00	Hex. Wrench (H5/32)	1	9610 3008 00 00	
	Cylinder Assy.	1set	0187 0304 00 99				
	(c) Cylinder	1	※ ↑				
	(d) Pin (2.5x6)	2	8055 1053 00 00				
	(e) Rotor	1	0187 0305 00 00				
	(f) Vane	9	0187 0306 00 00				
	Lower Plate Assy.	1set	0187 0307 00 99				
	(g) Lower Plate	1	0187 0307 00 00				
(h) Ball Bearing (6902CM)	1	9102 1004 00 00					
(i) Pin (2x5)	1	8055 1040 00 00					
4 ST-Packing (33.15x36.9x0.2)	1	8011 1105 00 00					
5 Lower Plate Spacer	1	0190 0311 00 00					
6 Rubber Grip	1	0188 0144 00 00					

The part "※" can not be supplied individually. So please order it as a unit of assembly shown by arrow mark (↑).
 ☆marked parts; use one of them.